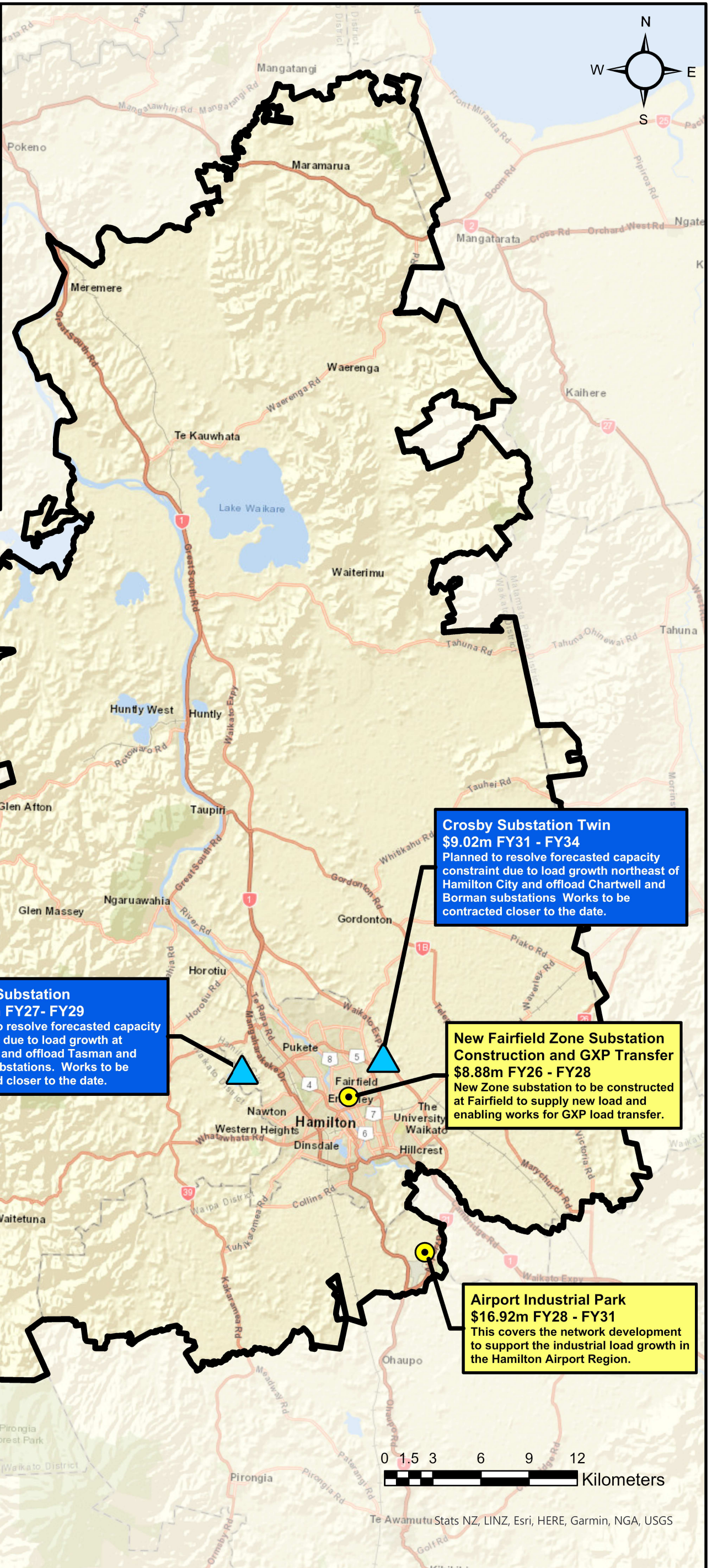


NETWORK WIDE PROJECTS

Project Name	Timing	\$ (m)	Description
Distribution transformer and LV feeder upgrade projects identified via smart meters	FY25-FY34	8.03	This covers a network-wide range of subprojects that involve upgrading distribution transformers, low voltage lines and cables to address power quality issues identified by smart meters.
Distribution Network Reinforcement	FY25-FY34	30.63	This covers a range of subprojects that involve upgrading distribution circuits and switchgear to relieve constraints from incremental network growth.
Fibre routes	FY25-FY34	8.65	This covers a network-wide installation of fibre to provide redundancy and high bandwidth to key sites.
Network Reliability Project	FY25-FY34	6.78	This covers network wide installation of automated ring main units, reclosers, sectionalisers and other automated switchgear.
EV & Process Electrification	FY25-FY34	57.43	This covers upgrade projects required for distribution network, substations and transformers to enable EV load growth and process electrification.
Network Resilience Initiatives	FY26-FY34	8.75	This covers a network-wide range of initiatives to improve the resilience of the network against severe weather and other high impact, low probability (HILP) events.



Crosby Substation Twin
\$9.02m FY31 - FY34
 Planned to resolve forecasted capacity constraint due to load growth northeast of Hamilton City and offload Chartwell and Borman substations. Works to be contracted closer to the date.

Exelby Substation
\$11.06m FY27 - FY29
 Planned to resolve forecasted capacity constraint due to load growth at Rotokauri and offload Tasman and Avalon substations. Works to be contracted closer to the date.




New Fairfield Zone Substation Construction and GXP Transfer
\$8.88m FY26 - FY28
 New Zone substation to be constructed at Fairfield to supply new load and enabling works for GXP load transfer.

Airport Industrial Park
\$16.92m FY28 - FY31
 This covers the network development to support the industrial load growth in the Hamilton Airport Region.

Capex

Created by: JHovens Status: Final
 Projection: NZTM Request No: 114062
 Date: 21/6/2024 File name: 114062.aprx

LEGEND

-  WEL BOUNDARY
-  CAPEX DEVELOPMENT
-  PROPOSED SUBSTATIONS

ACKNOWLEDGEMENTS AND DISCLAIMERS

DISCLAIMER
 1. This GIS material is made available at the discretion of WEL Networks Ltd (WEL). Maps and data are to be used for indicative purposes only and WEL is not responsible for any inaccuracies. WEL, excluded to the fullest extent possible all liability, for any cost or expenses, direct or indirect (including loss of data and loss of profit) arising from any inaccuracy in, or use of, the GIS material supplied by WEL.
 2. It is your responsibility to ensure you are aware of all utility installations in your area of work. You will be liable for all cost and expenses (Direct and Indirect, including solicitor-client cost) incurred by WEL if you damage or affect any of WEL's equipment, including cables.
 3. For any instructions on how to read this plan please refer to the legend at: www.wel.co.nz/every-day-home-safe/working-on-our-network/service-plans
 4. If any damage is incurred, WEL Networks Ltd is to be notified immediately.
 5. If 33kV cables are in the area, please contact a cable locator at WEL Networks Ltd on 0800 800 935 then press "2"
 6. Standard Trench offsets are: 0.4m and 2.7m from the nearest legal boundary.
 7. Warning: The standard duct colour for electrical cables is ORANGE, however, experience has shown electrical cables may be found in ducts of any colour. You must assume all ducts may contain live cables until positively proven otherwise.

