



POSITION DESCRIPTION

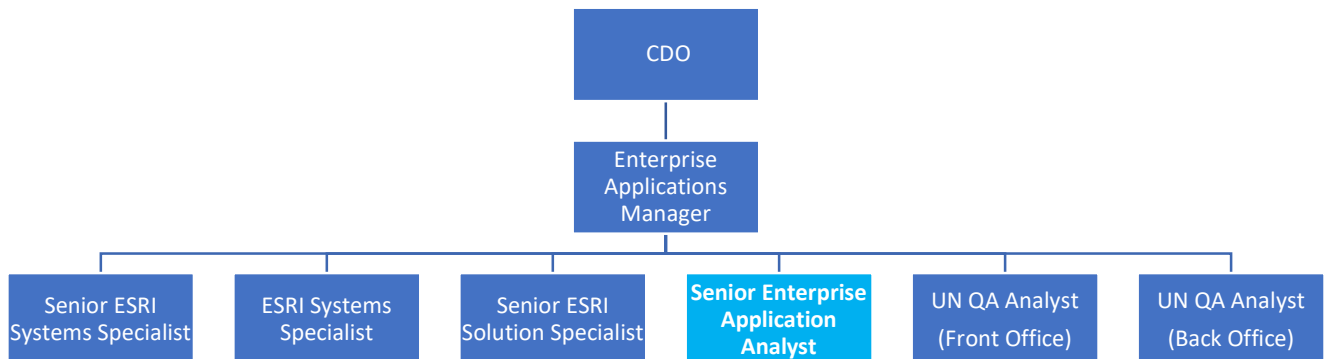


Position title:	Senior Enterprise Applications Analyst		
Reports to:	Enterprise Applications Manager		
Group:	Technology	Unit:	Technology
Revision:	02/2025	Date:	07 April 2025

Purpose

To support the delivery of Enterprise Application enhancements, reports, BAU requests and business requests through a continuous delivery model. The role will be responsible for management of all regulatory and other data and map requests as well as ensuring the reporting capabilities of SAP and ESRI applications are understood by our business and leveraged.

Reporting Structure



Resource Accountabilities

Staff numbers	Nil	Operating Budget	Nil
Capital Budget	Nil	Expense Authority	Nil

Performance Outputs

Key Result Areas (What/Result)	Key Tasks / Activities (How)	Performance Measures (Quantity, Quality, Time, Cost)
Assist with the management and delivery of the Enterprise applications backlogs	<ul style="list-style-type: none"> • Assist with running the sprints and associated ceremonies (standups, backlog refinement, retrospectives etc.) across the enterprise application teams. • Support coordination and the prioritisation process of business requirements with the business representatives' group • Collaborate with other teams and stakeholders to ensure blockers are removed for the delivery teams • Work with business SMEs to ensure business requirements and challenges are captured and governed following a high standard • Continually develop reports and dashboards to track progress and provide insights using SAP, ESRI and develops toolsets • Continually develop the delivery model to make the process more efficient for WEL 	<ul style="list-style-type: none"> • Established backlogs • Progress Reporting and dashboards • Documented Delivery framework • Accurate Capacity/resource forecasting • Planned delivery dates of all requests visible to all
Provide support and training to users of devops and delivery process	<ul style="list-style-type: none"> • Support and lead the training of the Enterprise applications ways of working including devops tools • Help with mentoring team members with continues delivery model 	<ul style="list-style-type: none"> • Users are supported and satisfied with our services (Customer feedback). • Save documentation, information and data into the appropriate corporate systems.

		<ul style="list-style-type: none"> Team members are trained to use the tools and follow the processes to be efficient and deliver
Provide support for Geospatial and ERP Reporting	<ul style="list-style-type: none"> Leverage the reporting capabilities of ESRI and SAP platforms to provide geospatial analysis and generate reports for both business and IT needs. Work closely with customers documenting their reporting requirements and desired business outcomes Work with vendors (SAP, ESRI and others) to understand the reporting capabilities available and apply them where appropriate 	<ul style="list-style-type: none"> Develop comprehensive documentation on all aspects of reporting you work on. Understand the reporting requirements and find native/out of the box reporting solutions Present new reporting capabilities to business stakeholders where applicable
Manage all regulatory and ad hoc data requests	<ul style="list-style-type: none"> Coordinate all data requests from external parties and internal teams Create and manage a yearly delivery plan for all data requests Ensure resources are aligned and activities are booked in devops board to ensure timely delivery 	<ul style="list-style-type: none"> All data requests are managed and delivered in timely manner Consistent process for all data requests Annual delivery plan for all data requests
To participate in, and contribute to, other Enterprise application projects	<ul style="list-style-type: none"> Undertake other Enterprise Applications projects for WEL when required and able. Undertake continuous improvement projects as and when required. 	<ul style="list-style-type: none"> Achievement of agreed project measures Save documentation, information and data into the appropriate corporate systems.

Targeting “Best in Safety”	<ul style="list-style-type: none"> • Promotion of good safety management practices. • Participation in safety and wellness activities. • Being a safety leader. 	<ul style="list-style-type: none"> • WEL’s health and safety policies and procedures are adhered to at all times.
To work in and promote a ‘Best in Service’ attitude to all endeavours	<ul style="list-style-type: none"> • Engage within the business and with community / external stakeholders in a way that supports ‘Best in Service’, always. 	<ul style="list-style-type: none"> • WEL’s reputation is enhanced in the community • You are known for your excellent customer service

Person Specification

Qualifications	Essential	<ul style="list-style-type: none"> Bachelor's degree in computer science, engineering, or geography / or similar or / relevant level experience
	Desirable	<ul style="list-style-type: none"> ESRI and SAP reporting frameworks and technology qualifications
Experience	Essential	<ul style="list-style-type: none"> Proven experience (5+ years) with ESRI and SAP products within an enterprise sized environment, including ArcGIS Online and S4HANA Proven experience and knowledge of continuous delivery principles, tools and practices. Experience with Geospatial and SAP application reporting. Experience with managing data transformation and data analysis and reporting tasks. A portfolio of work that demonstrates high quality work and deliveries previously.
	Desirable	<ul style="list-style-type: none"> Understanding of the ArcGIS Utility Network Experience with the GIS Electrical datasets
Role Specific Competencies	<ul style="list-style-type: none"> Technical ability: Provides high quality ESRI/SAP outputs, solution and support using the tools provided. Fact Finding: Knows where to obtain relevant information. Checks facts and data. Retrieves and absorbs information quickly. Documents findings clearly and concisely. Communication: Speaks clearly and fluently to both individuals and groups. Writes in a clear and concise manner, using appropriate grammar, style and language for the reader. Teamwork: Works co-operatively as part of the team. Actively seeks out and listens to the views and ideas of others. Shares information and knowledge freely. Planning and Organising: Organises and schedules activities and resources. Sets up and monitors time scales and plans. Action Orientation: Demonstrates a readiness to take initiative and originate actions. Client focus: Dedicated to providing a prompt, efficient and personalised service to clients, and goes out of way to ensure that individual client needs are met. 	

	<ul style="list-style-type: none">• Quality Orientation: Has a very high attention to detail. Shows awareness of goals and standards. Follows through to ensure that quality and productivity standards are met.
--	---

Our Purpose

Enabling our *communities to thrive*

Our Vision

To create and support an *innovative and sustainable energy future*

Best in Service

So we have the *trust of our community*



Best in Safety

Every Day - *Home Safe*



Our Values



Agile

We listen to ideas, we explore opportunities and we adapt to changing situations with an open mind. When change is needed we make sure we understand why and we make it work. We're flexible and we respond professionally to change.



Build the business

We make sure our day to day activity is sound while exploring ways to improve the way we work or things we do. We often ask "is there a better way to do this?" and we investigate options.



Care for each other,
the customer and
our assets

We work as a team across the business to do things the right way. We treat others with respect, listening to their needs so we can deliver a reliable and safe service to our communities.



Do the right thing

We make decisions with integrity and when we can, we help others make the right decision for their situation. We're open, honest and trustworthy. We speak up if we feel we should and we listen to others.



Every Day - Home Safe

We lead by example to keep ourselves, our workmates and our communities safe. We use the right equipment, we challenge unsafe acts and we say no if we think it's not safe.