



POSITION DESCRIPTION

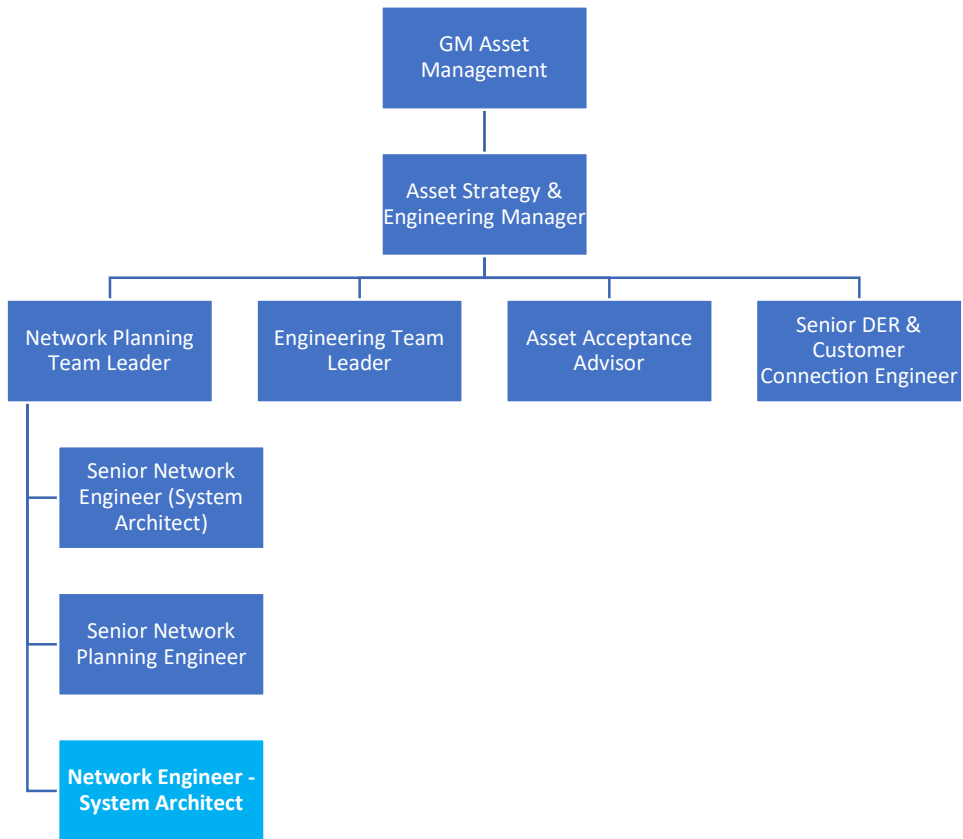


Position title:	Network Engineer – System Architect		
Reports to:	Network Planning Team Leader		
Group:	Asset Management	Unit:	Asset Strategy & Engineering
Revision:	03/2025	Date:	20 March 2025

Purpose

To undertake network planning that optimises WEL’s network and its future growth.

Reporting Structure



Resource Accountabilities

Staff numbers	0	Operating Budget	Nil
Capital Budget	Nil	Expense Authority	As per Level 4 of DFA

Performance Outputs

Key Result Areas (What/Result)	Key Tasks / Activities (How)	Performance Measures (Quantity, Quality, Time, Cost)
Network security, reliability and power quality optimisation	<ul style="list-style-type: none"> • Identify power quality issues • Maintain network analysis tools to enable power analysis activity and loss optimisation scenarios to be evaluated • Perform network analysis to produce System Security Reports • Identify reliability risk on the network • Assess smart meter data to proactively address voltage excursions 	<ul style="list-style-type: none"> • Network security, reliability and power quality align with WEL standards • Evaluation and reporting is accurate
Network security, reliability and power quality issues	<ul style="list-style-type: none"> • Use System Security Reporting, LVC and reliability monitoring processes • Undertake rigorous analysis to develop innovative project solutions • Produce project definition documents that scope, provide high level design and cost estimates for capital projects • Produce scopes for works under Annual Work List • Generate and prioritise initiatives for network planning to meet performance requirements 	<ul style="list-style-type: none"> • Existing and future network security, reliability and power quality issues are addressed • WEL's defined network performance and financial objectives are met • Adherence to assigned WEL processes, procedures and work method statements

	<ul style="list-style-type: none"> • Provide network planning input into the Asset Replacement programme • Ensure regulatory compliance to the Automatic Under Frequency Load Shedding Scheme (AUFLS) 	
<p>New network connections of load / generation</p>	<ul style="list-style-type: none"> • Accurately assess the impact of proposed connections of load or generation on network security, power quality and reliability • Manage load forecasting data and perform analysis to ensure up to date load data is available to the Network Planning team. • Propose non-capital and capital solutions to ensure customer requirements are met whilst maintaining WEL's security, reliability and power quality standards • Undertake detailed engineering studies to produce sound technical solutions • Provide engineering / planning information to consultants for detailed design requirements 	<ul style="list-style-type: none"> • Future network capacity is appropriate and cost effective in meeting anticipated growth • Time to completion reduces over time through the development of better work-flow management and the use of tools such as Compass, DigSILENT and PowerOn
<p>Network Intelligence and life of network assets</p>	<ul style="list-style-type: none"> • Perform analysis of the network assets to ensure their healthy operation and generate 	<ul style="list-style-type: none"> • Asset health and performance are identified

	<p>solutions for the improvement of asset health</p> <ul style="list-style-type: none"> • Create solutions that can support network for intelligent operations and decision making 	
<p>To contribute to the continuous improvement of asset management</p>	<ul style="list-style-type: none"> • While contributing to the design, planning, installation, maintenance, operation, servicing, renewal, and disposal of WEL's permanently connected Network Assets and Network Management Systems: <ul style="list-style-type: none"> ○ Participate in Asset Management activities that align to the Asset Management Policy ○ Contribute to the achievement of WEL's Asset Management Objectives (as detailed in the Strategic Asset Management Plan (SAMP)) • Support Asset Management assurance initiatives 	<ul style="list-style-type: none"> • Active support for objectives and outcomes as detailed is evidenced • WEL demonstrates excellence in asset management through retention of ISO 55001 Asset Management Standard certification
<p>To contribute to overall performance and development of the unit</p>	<ul style="list-style-type: none"> • Help in the development of tools such as Compass and work-flow management • Represent WEL Networks as required at relevant external forums 	<ul style="list-style-type: none"> • The unit is supported to operate optimally within the Asset Management Group and WEL
<p>To participate and contribute to projects</p>	<ul style="list-style-type: none"> • Undertake special projects for WEL when required 	<ul style="list-style-type: none"> • Achievement of agreed project measures

	<ul style="list-style-type: none"> • Undertake continuous improvement projects as and when required 	
Targeting “Best in Safety”	<ul style="list-style-type: none"> • Promotion of good safety management practices • Participation in safety and wellness activities • Being a safety leader 	<ul style="list-style-type: none"> • WEL’s health and safety policies and procedures are adhered to at all times
To work in and promote a ‘Best in Service’ attitude to all endeavours	<ul style="list-style-type: none"> • Engage within the business and with community / external stakeholders in a way that supports ‘Best in Service’, always 	<ul style="list-style-type: none"> • WEL’s reputation is enhanced in the community • You are known for your excellent customer service

This position description is intended as an insight to the main tasks and responsibilities required in the role and is not intended to be exhaustive. It may be subject to change, in consultation with the job holder

Person Specification

Qualifications	Essential	<ul style="list-style-type: none"> Recognised BE Electrical or equivalent degree
	Desirable	<ul style="list-style-type: none"> CPEng (or working towards)
Experience	Essential	<ul style="list-style-type: none"> A minimum of 2 years relevant industry experience Network modelling software (Dig SILENT) – load flow, contingency analysis, power quality, fault-levels, DER connections, cable capacity, network configuration among others.
	Desirable	<ul style="list-style-type: none"> Experience in Electricity Distribution Networks
Role Specific Competencies	<ul style="list-style-type: none"> Integrity: Demonstrates consistently high integrity, professionalism and business ethics Collaboration: Works with peers to achieve win-win results, and drives behaviour to optimise business outcomes rather than department outcomes Critical Thinker: Ability to gather a wide range of information, comprehend and provide insight Problem Solving: Analyses issues and breaks them down into their component parts. Makes systematic and rational judgment based on relevant information Planning and Organising: Organises and schedules events, activities and resources. Sets up and monitors timescales and plans Creativity / Innovation: Generates new ideas and imaginative approaches to work related issues. Identifies fresh approaches and shows a willingness to question traditional thinking Flexibility/Adaptability/Teamwork: Successfully adapts to changing demands and conditions. Works co-operatively as part of the team. Actively seeks out and listens to the views and ideas of others Communication: Effective communicator with internal providers and external agencies, in adherence to defined processes and procedures. Action Orientation: Demonstrates a readiness to make decisions, take initiative and originate actions 	

Our Purpose

Enabling our *communities to thrive*

Our Vision

To create and support an *innovative and sustainable energy future*

Best in Service

So we have the *trust of our community*



Best in Safety

Every Day - *Home Safe*



Our Values



Agile

We listen to ideas, we explore opportunities and we adapt to changing situations with an open mind. When change is needed we make sure we understand why and we make it work. We're flexible and we respond professionally to change.



Build the business

We make sure our day to day activity is sound while exploring ways to improve the way we work or things we do. We often ask "is there a better way to do this?" and we investigate options.



Care for each other, the customer and our assets

We work as a team across the business to do things the right way. We treat others with respect, listening to their needs so we can deliver a reliable and safe service to our communities.



Do the right thing

We make decisions with integrity and when we can, we help others make the right decision for their situation. We're open, honest and trustworthy. We speak up if we feel we should and we listen to others.



Every Day - Home Safe

We lead by example to keep ourselves, our workmates and our communities safe. We use the right equipment, we challenge unsafe acts and we say no if we think it's not safe.